

**DASH** go<sup>TM</sup>  
unprocess your food<sup>TM</sup>



# CITRUS JUICER

instruction manual & recipe guide

MODEL JB065



DASH GO  
CITRUS JUICER

Safety Guidelines..... 4-5

Parts & Features..... 6-7

Setting Up Your Citrus Juicer..... 8-9

Using Your Citrus Juicer..... 10-11

Maintenance ..... 12-13

Troubleshooting ..... 14

Recipes..... 15-17

Customer Support..... 18

Warranty..... 19

## Please Read and Save this Instruction and Care Manual

When using electrical appliances, basic safety precautions should be followed, including:

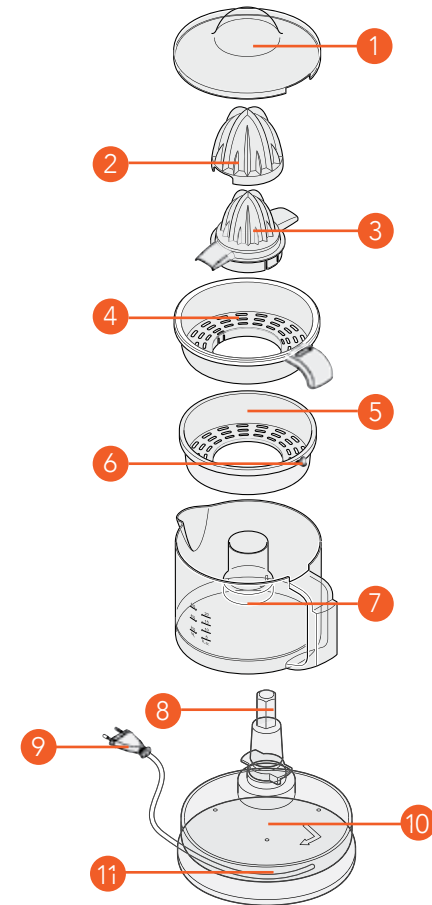
- Read all instructions carefully.
- Remove all packaging and labels from appliance prior to use.
- To protect against risk of electrical shock do not put cord, plugs, or appliance in or near water or other liquid.
- This appliance is intended for household use only; please use only as instructed.
- The Citrus Juicer is exclusively designed to extract juice from citrus fruits.
- Keep appliance away from children when in use.
- The Citrus Juicer must not be used for commercial purposes.
- To guard against risk of electric shock, always remove the plug from the outlet rather than pulling on the cord.
- Do not use appliance in or near water or other liquid.
- Do not use the appliance if any parts are damaged.
- Unplug from outlet when not in use, during assembly, during disassembly, and before cleaning.
- Do not operate this appliance with a damaged cord, damaged plug, after the appliance malfunctions, is dropped, or damaged in any manner.
- For any maintenance other than cleaning, please contact StoreBound by phone at 1-800-898-6970 from 7AM - 7PM PST Monday - Friday or by email at support@storebound.com.
- Use only Citrus Juicer attachments recommended or sold by StoreBound. Others may result in fire, electric shock, or injury.
- Do not place on or near a hot gas burner, hot electric burner, or in a heated oven.
- Do not leave unattended when appliance is running.
- Do not use outdoors.
- Do not let the cord hang over edge of table, hang over the sink, or touch hot surfaces.

- Avoid contact with moving parts.
- Only use the Citrus Juicer on a stable surface.
- Be certain Lid and Cones are securely in place before using the appliance.
- When cleaning the Base do not submerge in any liquid. Instead use a soft damp cloth to wipe down.
- Do not put the appliance in the refrigerator.
- Close supervision is required when the appliance is used near children. Children should not be allowed to operate this appliance.
- Always be sure to turn off the appliance prior to assembly, disassembly, cleaning and storage.
- This appliance has a polarized plug (one blade is wider than the other). To reduce the risk of electric shock, this plug will fit in a polarized outlet only one way. If the plug does not completely fit in the outlet, reverse the plug. If it still does not fit, contact a qualified electrician. Do not attempt to modify the plug in any way
- **PLEASE READ AND SAVE THIS INSTRUCTION AND CARE MANUAL**



## PARTS & FEATURES

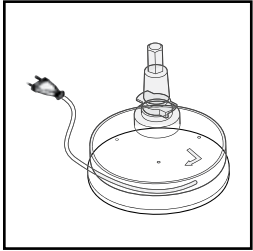
1. Lid
2. Large Juicer Cone
3. Small Juicer Cone
4. Upper Screen
5. Bottom Screen
6. Screen Opener
7. Juice Container
8. Drive Axle
9. Power Cable with Main Plug
10. Base
11. Cable Wrap



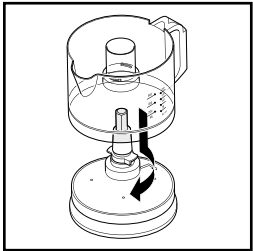
## PARTS & FEATURES

# SETTING UP YOUR CITRUS JUICER

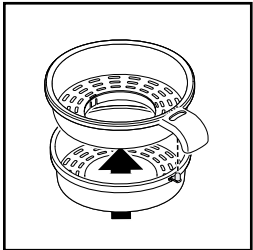
Clean the Citrus Juicer and all of its components prior to assembly and use.



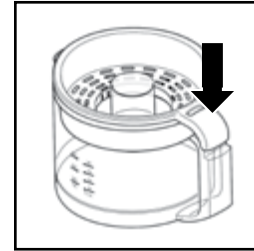
1. Uncoil the Power Cable from the Cable Wrap to the desired length. Place the Base on a dry, solid and level surface.



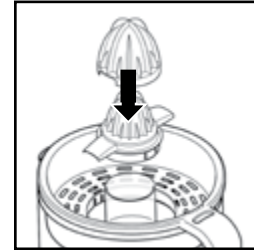
2. Place the Juice Container onto the Base with the handle above the arrow. Turn the Juice Container clockwise until it locks into place.



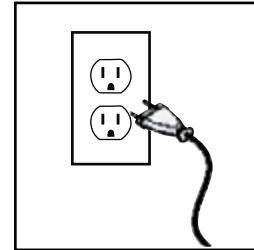
3. Place the Upper Screen on the Bottom Screen so that the Screen Opener sticks through the opening and the screens lock into place.



4. Place the assembled Screen on the Juice Container so that the handles fit perfectly one on top of the other.



5. Place the Small Juicer Cone on the Drive Axle. In the process, the Small Juicer Cone must lock into the Screen. For large citrus fruits (e.g. oranges, grapefruit), place the Large Juicer Cone on the Small Juicer Cone so that the wings of the Small Juicer Cone fit into the recesses of the Large Juicer Cone.



6. Insert the Main Plug into a wall socket corresponding to the technical data.

Note: You can easily wind-up the Power Cable in the Cable Wrap.

# USING YOUR CITRUS JUICER

Always remember to use fresh, washed fruit. Always ensure that nothing is on the Screen or in the Citrus Juicer before operating.

1. Cut the citrus fruits in half.
2. Exert slight pressure on the half of the citrus fruit when pushing the cut surface down onto the Juicer Cone. Be sure not to put excessive pressure on the Juicer Cone. The Cones will start turning and the juice will begin to flow into the Juice Container. Once the juice reaches the 600 ml mark, empty the Juice Container. Never exceed the 600 ml mark.

Note: As soon as you stop pressing on the Juicer Cone, the Citrus Juicer will stop.

3. Unplug the Citrus Juicer before removing the Juice Container from the Base.
4. Turn the Juice Container counterclockwise and lift from the base. Pour the juice out of the Juice Container. Make sure to clean the appliance after each use as soon as possible so that the pulp does not dry and stick to the surface.

# USING YOUR CITRUS JUICER

## Tips and Tricks

- You can influence the amount of pulp content in your juice by using the Screen Opener. For a high pulp content, set the screen opener to the large dot mark so that the openings in the screen are open wide.
- In order to achieve the largest juice yield possible, the Juicer Cone will change direction of rotation after several starts and stops.
- If the Juicer Cone is not turning, check if there are fruit pips/seeds between the Juicer Cone and the Screen and remove them.





# MAINTENANCE

Note: Make sure to clean the Citrus Juicer after each use as soon as possible so that the pulp does not dry and stick to the surface.

**WARNING: DO NOT SUBMERGE THE BASE, POWER CABLE WITH MAIN PLUG IN WATER OR ANY LIQUID. THE BASE IS NOT DISHWASHER SAFE.**

## DISASSEMBLY

1. Unplug the Citrus Juicer before cleaning.
2. Remove the Lid. Juicer Cones and Screens.
3. Exert slight pressure on the Screen Opener to disassemble.
4. Turn the Juice Container counterclockwise and lift from the Base.
5. Wipe the Base down with a damp cloth.
6. Wash all removable accessories by hand. Make sure to wash the small cavity in the handle with a sufficient amount of hot (not boiling) water.
7. Dry all parts carefully, before reassembling the appliance and storing it.

## CLEANING

- The Base, Power Cable with Main Plug must NEVER be immersed in water or any other liquid.
- Never use boiling water to clean the Citrus Juicer.



*Most juices you get at the grocery store contain ingredients you can't even pronounce. Juice at home, and get all the nutrients without all the junk.*

# TROUBLESHOOTING

If your appliance fails to function as required, please try this checklist first. Perhaps there is only a minor problem that you can solve yourself.

## The Citrus Juicer does not function.

Check to see if your appliance is connected to a working power outlet.

## The Juicer Cone stopped turning.

- Try using a little extra pressure when pressing down on the Juicer Cone.
- Check to see if there is anything on top of the Screen.
- Check if fruit seeds/pips have been caught between the Juicer Cones and the Screen.



# RECIPES

delicious & satisfying ideas for everyday





Blood Orange	Orange Grapefruit	Raspberry Lemonade
<ul style="list-style-type: none"><li>• 2 blood oranges</li><li>• 4 oranges</li></ul>	<ul style="list-style-type: none"><li>• 3 grapefruits</li><li>• 5 oranges</li></ul>	<ul style="list-style-type: none"><li>• 1 cup raspberry tea</li><li>• 3 lemons</li></ul>



Sweet 'n Sour	Mint-Lime	Orangeade
<ul style="list-style-type: none"><li>• 2 limes</li><li>• 4 ripe oranges</li></ul>	<ul style="list-style-type: none"><li>• 3 sprigs mint</li><li>• 2 limes</li><li>• sparkling water</li></ul>	<ul style="list-style-type: none"><li>• 2 lemons</li><li>• 5 oranges</li><li>• agave</li></ul>

For product support, warranty and maintenance related questions, please contact StoreBound directly at: 1-800-898-6970 from 7AM - 7PM PST, Monday - Friday, or by email at [info@storebound.com](mailto:info@storebound.com).

## REPAIRS

**DANGER!** Risk of electric shock! The Dash Go Citrus Juicer is an electrical appliance. Do not attempt to repair the appliance yourself under any circumstances.

Contact Customer Service regarding repairs to the device.

## TECHNICAL SPECIFICATIONS

**Model Number:** JB065

**Voltage:** 120V

**Frequency:** 60Hz

**Power:** 25 Watts

**Stock#:** DGCJ-20140708V3

## STOREBOUND, LLC – 1 YEAR LIMITED WARRANTY

Your StoreBound product is warranted to be free from defects in material and workmanship for a period of one (1) year from the date of the original purchase when utilized for normal and intended household use. Should any defect covered by the terms of the limited warranty be discovered within one (1) year, StoreBound, LLC will repair or replace the defective part. To process a warranty claim, contact Customer Care at 1-800-898-6970 for further assistance and instruction. A customer care agent will conduct troubleshooting in an attempt to fix any minor problems. If troubleshooting fails to fix the problem, a return authorization will be issued. Proof of purchase indicating date and place of purchase is required and should accompany the return. You must also include your full name, shipping address, and telephone number. We are unable to ship returns to a PO Box. StoreBound will not be responsible for delays or unprocessed claims resulting from a purchaser's failure to provide any or all of the necessary information. Freight costs must be prepaid by the purchaser.

Send All Inquiries To: [info@storebound.com](mailto:info@storebound.com)

There are no express warranties except as listed above.

REPAIR OR REPLACEMENT AS PROVIDED UNDER THIS WARRANTY IS THE EXCLUSIVE REMEDY OF THE CUSTOMER. STOREBOUND SHALL NOT BE LIABLE FOR ANY INCIDENTAL OR CONSEQUENTIAL DAMAGES FOR BREACH OF ANY EXPRESS OR IMPLIED WARRANTY ON THIS PRODUCT EXCEPT TO THE EXTENT PROHIBITED BY APPLICABLE LAW. ANY IMPLIED WARRANTY OF MERCHANTABILITY OR FITNESS FOR A PARTICULAR PURPOSE ON THIS PRODUCT IS LIMITED IN DURATION TO THE DURATION OF THIS WARRANTY.

Some states do not allow the exclusion or limitation of incidental or consequential damages, or limitations on how long an implied warranty lasts. Therefore, the above exclusions or limitations may not apply to you. This warranty gives you specific legal rights and you may also have other rights, which vary from state to state.

## DOUBLE YOUR PRODUCT WARRANTY

To double your product warranty, register your product online at: <http://register.bydash.com>



For more information, please visit [bydash.com](http://bydash.com)  
Customer Support 1-800-898-6970